

SQL Server Loadfest

Lesson 5 – Preparing for Production

SQL Server Loadfest

Lesson 5 – Preparing for Production

Andrew Novick
Novick Software, Inc.

What we'll Learn

- § Configuring Networks
- § Security
- § Data Maintenance

Configuring Networks

§ Tool – SQL Server Configuration Manager

§ Protocols

- Shared Memory
- TCP/IP
- Named Pipes
- VIA – Virtual Interface Adapter

Demo – Configuration Manager

TempDB Management

§ TempDb can get high activity

§ Should have # Files = 1.0 to .5 * # CPU

§ Should not grow

§ All files equal size

Memory Configuration

§ More is better

§ Can be limited

§ /3GB and /AWE option for 32 bit

§ Leave the defaults, unless you have a reason

SQL Server Loadfest

Lesson 5 – Preparing for Production

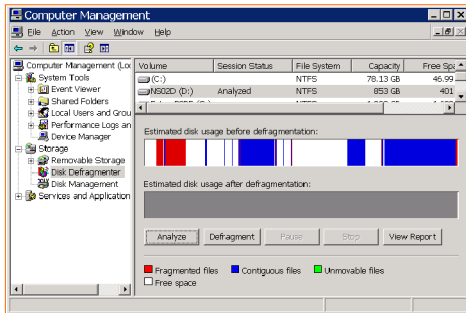
Database Configuration

- § Grow the database manually
- § Leave AutoGrow on in an Absolute amount
- § Leave AutoStats on and AutoStats Async off
- § Turn off AutoShrink
- § Turn off AutoClose, unless you have a reason

Alerts – Critical Errors

- § Create an alert for errors 11 and above
- § Alerts for 11-16 go to developers
- § Alerts 17 and above are for IT

Disk Defragmentation



Basic Security

- § Use Windows Authentication when possible
- § Assign users to AD Groups and the Group to a SQL Server Login
- § Turn off services and features that are not necessary

Anti-virus/Anti-Spyware

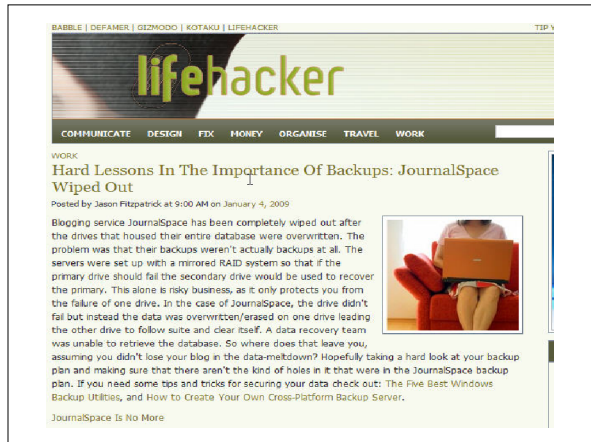
- § Not on SQL Server if you can
- § Run scans remotely off-hours
- § Never monitor MDF, LDF, or NDF files

Disaster Recovery



SQL Server Loadfest

Lesson 5 – Preparing for Production



Maintenance Plans

- § Replaces Database Maintenance Plans
- § Based on SSIS
- § Use the Maintenance Plan Wizard

Demo – Maintenance Plans

Best Practices Analyzer

- § Existed for SQL Server 2000 and 2005
- § Does NOT exist for SQL Server 2008
- § Use Policy Management instead

MBSA

- § Microsoft Baseline Security Analyzer

Policy Based Management

- § Multi-Instance Management Framework
- § Used from SSMS
- § Best Practices Analyzer Replacement

Demo Policy Based Managemet

Performance Data Warehouse

- § Gathers statistics on the performance of SQL Server 2008
- § Can grow rapidly
- § Gets data from DMV's, perfcounters, etc.

Resource Governor

- § SQL Server 2008 Enterprise Edition
- § Connection strings can be directed to resource Pools
- § Resource allocation can be changed during the day

What We Learned

- § Configuring the Network Protocols
- § Configuring database storage
- § Backup, Backup , Backup
- § Policy Based Management

Problems?

SQL Clinic 1:15 – 2:30
MPR B

Thank You for Attending

Andrew Novick
§
anovick@NovickSoftware.com
§
www.NovickSoftware.com