

SQL Server Loadfest

Lesson 5 – Preparing for Production

Andrew Novick
Novick Software, Inc.

What we'll Learn

- Configuring Networks
- Security
- Data Maintenance

Configuring Networks

- Tool – SQL Server Configuration Manager
- Protocols
 - Shared Memory
 - TCP/IP
 - Named Pipes
 - VIA – Virtual Interface Adapter

Demo – Configuration Manager

TempDB Management

- TempDb can get high activity
- Should have # Files = 1.0 to .5 * # CPU
- Should not grow
- All files equal size

Memory Configuration

- More is better
- Can be limited
- /3GB and /AWE option for 32 bit
- Leave the defaults, unless you have a reason

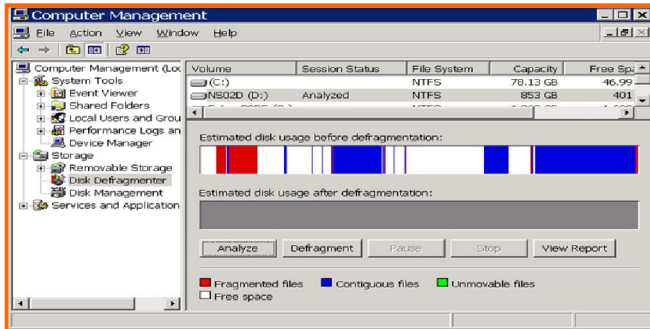
Database Configuration

- Grow the database manually
- Leave AutoGrow on in an Absolute amount
- Leave AutoStats on and AutoStats Async off
- Turn off AutoShrink
- Turn off AutoClose, unless you have a reason
 - SQLExpress does use it

Alerts – Critical Errors

- Create an alert for errors 11 and above
- Alerts for 11-16 go to developers
- Alerts 17 and above are for IT

Disk Defragmentation



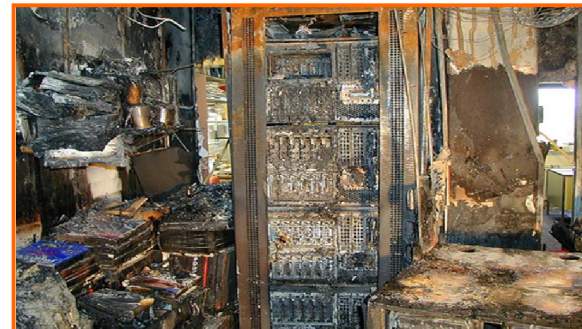
Basic Security

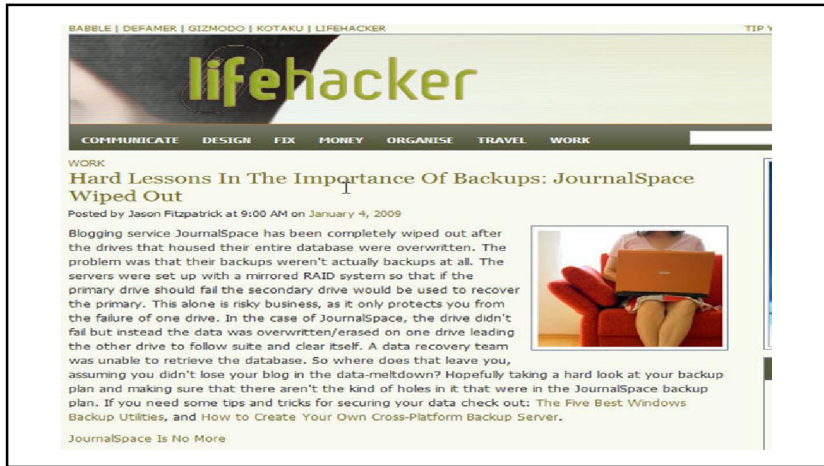
- Use Windows Authentication when possible
- Assign users to AD Groups and the Group to a SQL Server Login
- Turn off services and features that are not necessary

Anti-virus/Anti-Spyware

- Not on SQL Server if you can
- Run scans remotely off-hours
- Never monitor MDF, LDF, or NDF files

Disaster Recovery





Maintenance Plans

- Replaces Database Maintenance Plans
- Based on SSIS
- Use the Maintenance Plan Wizard

Demo – Maintenance Plans

Best Practices Analyzer

- Existed for SQL Server 2000 and 2005
- New version for SQL Server 2008 R2
- Use Policy Management

MBSA

- Microsoft Baseline Security Analyzer

© Copyright 2010 Novick Software, Inc. All rights reserved.

Policy Based Management

- Multi-Instance Management Framework
- Used from SSMS
- Best Practices Analyzer Replacement

© Copyright 2010 Novick Software, Inc. All rights reserved.

Demo Policy Based Management

© Copyright 2010 Novick Software, Inc. All rights reserved.

Performance Data Warehouse

- Gathers statistics on the performance of SQL Server 2008
- Can grow rapidly
- Gets data from DMV's, perfcounters, etc.

© Copyright 2010 Novick Software, Inc. All rights reserved.

Resource Governor

- SQL Server 2008 and R2 Datacenter/Enterprise Edition
- Connection strings can be directed to resource Pools
- Resource allocation can be changed during the day

© Copyright 2010 Novick Software, Inc. All rights reserved.

What We Learned

- Configuring the Network Protocols
- Configuring database storage
- Backup, Backup , Backup
- Policy Based Management

© Copyright 2010 Novick Software, Inc. All rights reserved.

Problems?

SQL Clinic – 2:30 – 3:45

MPR C

© Copyright 2010 Novick Software, Inc. All rights reserved.

Thank You for Attending

Andrew Novick

anovick@NovickSoftware.com

www.NovickSoftware.com

SQL Server Loadfest

Lesson 5 – Preparing for Production

